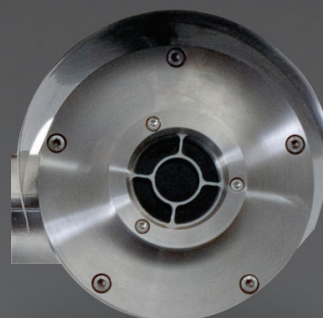


# COEX™ C3000-1FT Ex d Camera Station

The COEX™ C3000-1FT camera series has a unique compact and lightweight design specifically developed for hazardous area applications. With a 316 stainless steel enclosure the C3000-1FT is designed for toughness and durability to operate in the most adverse environments whilst allowing constant visual feedback in zero light conditions.



The COEX™ C3000 Ex d camera stations are manufactured from high grade, corrosion resistant, electro-polished 316 stainless steel – incorporating state of the art cameras, control and transmission modules.

The advanced mechanical design provides a reliable solution for both security and process monitoring in any environmental condition.

Integrating the latest thermal imaging technology allows the C3000 Fixed camera station to comprehensively cover a wide range of site applications where standard cameras would fail:

- Intruder / Perimeter Detection
- Process Monitoring / Fault Detection
- Material and Temperature Differentiation

## Features

- ATEX Certification
- CSAus Certification
- IECEx Certification
- CSA Canadian Certification
- DNV Type Approval
- IP66 & IP68 Rated – Completely Protected Against Dust & Water Ingress, for the Most Demanding Environment
- Type 6 Enclosure
- C-Tick Compliance
- Electro-polished 316 Stainless Steel, for Optimum Corrosion Resistance
- Low Voltage Operation
- Onscreen Menu Display Allowing Easy Configuration and Diagnostics
- Single Stationary Cable Tail
- Multi-protocol Telemetry for Extensive System Compatibility

- Germanium Window
- Thermostatically Controlled Window Demister
- Removable Camera Chassis for Ease of Servicing

## Options

- IP Available with Associated Junction Box
- Integral Fibre Optic Transmission

# Specifications

CERTIFICATIONS / RATINGS		[OPTIONS]		
Certifications / Ratings	ATEX / IECEx: ATEX II 2GD, Ex d IIC Gb; Ex tb IIIC Db; T4 / T5 / T6 US Class / Division: Class I, Div 1, Groups A, B, C, D; Class II, Div I, Groups E, F, G; T4 / T5 / T6 US Class / Zone: Class I, Zone 1, AEx d IIC Gb; Zone 21, AEx tb IIIC Db; T4 / T5 / T6 CAN: Ex d IIC Gb; Ex tb IIIC Db; Class II, Div 1, Groups E, F, G, Class III, Div 1; T4 / T5 / T6 DNV Type Approval EMC:61000 CE Compliant IP66 & IP68 (30m Submersion for 4 hrs) to IEC 60529 Type 6 Enclosure C-Tick Compliant			
ENVIRONMENTAL				
Rated Temperature	-55°C to +60°C			
MECHANICAL				
Material	Electro-polished 316 Stainless Steel			
Window	Germanium Glass, Thermostatically Operated Demister			
Mounting	1 x M10 Hole			
Dimensions (W x D x H)	179 x 235 x 310 mm			
Weight*1	8 kg			
ELECTRICAL				
Power Requirements	24Vac 50 / 60Hz or 24Vdc (±10%)			
Power Consumption	20VA Maximum			
TELEMETRY				
Interface	RS485 serial asynchronous data			
Protocols*2	Synectics™, Pelco® and other industry standard protocols available			
Functions*1	Zoom, Aux1, [Aux2], Aux In			
Thermal Camera Functions 300 Series*1	2x / 4x Electronic Zoom, Black Hot / White Hot, Ironbow, Auto / Manual Shuttering			
Thermal Camera Functions 600 Series*1	Continuous Electronic Zoom, Multiple Colour Palettes (including Inverted), Multiple Contrast Display, Contrast and Level Control, Hot and Cold Spot, Auto / Manual Shuttering			
OSD	Password protected on-screen menu system for camera station configuration and diagnostics			
CAMERA / LENS	C3000-1FT345	C3000-1FT315	C3000-1FT650	C3000-1FT625
Image Sensor	Amorphous Silicon Microbolometer			
Spectral Response	8 – 14 µm			
Refresh Rate	<9Hz [25Hz]			
Thermal Sensitivity	100mK		70mK [50mK]	
Resolution	384 x 288		640 x 480	
Fixed Focal Length	45 mm	15 mm	50 mm	25 mm
Angle of View (H)	12.2° x 9.3°	35° x 25°	12.4° x 9.3°	25° x 18.7°
Human Detection*3/4	~1000 m	~200 m	~1100 m	~560 m

NOTE: \*1 Dependant on equipment fitted. \*2 Refer to Synectics for availability and compatibility with other control systems. \*3 Based on Johnson Criteria. \*4 Actual range may vary depending on camera set-up, user experience, environmental conditions and type of monitor or display used.

## Synectic Systems

sales@synecticsglobal.com

synecticsglobal.com

Specifications subject to change. E & OE.

Copyright © Synectic Systems Group Ltd., Synectic Systems, Inc., Synectic Systems (Asia) Pte. Limited 2015. All Rights Reserved.

MANUFACTURER OF



CAMERA STATIONS

Reference Number:  
C3000-1FT/0215/A4 Iss 7