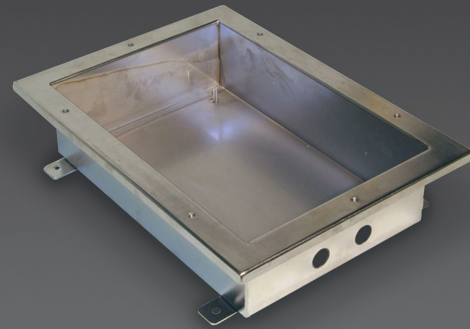


# COEX™ MJB Junction Boxes

The COEX™ MJB junction boxes have been developed exclusively to work with COEX™ camera stations for marine and safe area applications



Manufactured from the highest-grade electro-polished 316L stainless steel for maximum corrosion resistance, the COEX™ MJB range of junction boxes are designed specifically to work in conjunction with COEX™ marine camera stations.

These junction boxes can also house Synectics IP and fibre optic transmission modules, which when mounted at ground level provide a maintainable and accessible solution whilst also allowing ease of installation.

#### Features

- CSAus
- CSA Canadian
- DNV Type Approval
- NEMA Type 4 Enclosure
- IP66 Rated
- Electro-polished 316L Stainless Steel, for Maximum Corrosion Resistance
- High Performance in All Climates

# Specifications

## CERTIFICATIONS / RATINGS

Certifications / Ratings	DNV Type Approval NEMA Type 4X Enclosure CSA C22.2 NO. 94.1/UL 50 & CSA C22.2 NO. 94.2/UL 50E IP66 to IEC 60529
--------------------------	--

MECHANICAL	MJB1	MJB2	MJB3	MJB4	MJB5
Material	Electro-polished 316L Stainless Steel				
Dimensions (W x D x H)	202 x 90 x 264 mm	153 x 88 x 225 mm	268 x 88 x 366 mm	367 x 88 x 367 mm	445 x 125 x 445 mm
Weight Empty	2.1 kg	1.6 kg	3.9 kg	5.1 kg	10.6 kg
Mounting* <sup>1</sup>	4 x Ø M6				
Standard Gland Entries	4 x M20, 1 x M25	2 x M20, 1 x M25	4 x M20, 1 x M25	4 x M20, 1 x M25	4 x M20, 2 x M25

NOTE: \*1 Fixing Kit Included.

**Synectic Systems**  
sales@synecticsglobal.com  
**synecticsglobal.com**

Specifications subject to change. E & OE.  
Copyright © Synectic Systems Group Ltd., Synectic Systems, Inc., Synectic Systems (Asia) Pte. Limited 2015. All Rights Reserved.

MANUFACTURER OF  
  
CAMERA STATIONS

Reference Numbers: 03/GF0413\_3  
MJB/0215/A4 Iss 5