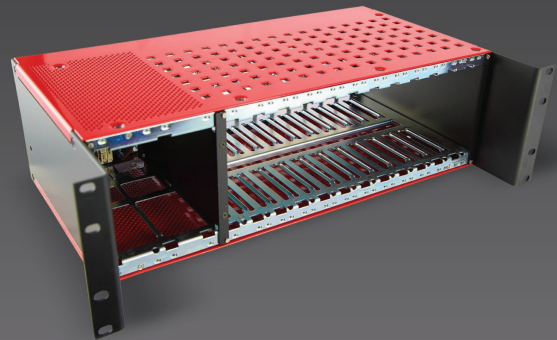


# SYN350 Fibre Optic Card Cage

The Synectics™ SYN350 maximises capacity and works seamlessly with a vast array of flexible fibre optic solutions. Designed to mount in standard 19" (483 mm) instrument racks for ease of integration with redundant power supply.



The SYN350 is a 19" 3RU high (132 mm) rack mounting chassis which accepts two power supply modules (SYN921) to allow redundant power plus from 1 to 12 SYN standard card format plug-in modules.

The plug-in power supplies (SYN921) are capable of providing power for any combination of plug-in cards.

## Features

- 19" (483 mm) Rack Mountable
- 3U High Compact Design
- Capable of Holding up to 12 Fibre Optic Cards
- Redundant Plug-in Power Supply (SYN921) Included
- Universal 90 to 264VAC Power Input
- Capable of Powering any Combination of Cards

## Options

- SYN350 Card Cage is Available Without Redundant Power (See SYN370 Card Cage)

# Specifications

## ENVIRONMENTAL

Operating Temperature	-20°C to +75°C
Relative Humidity	0-95% Non-condensing

## MECHANICAL

Material	Aluminium (Chassis)
Mounting	19" 3RU High (132 mm)
Card Capacity	12 x SYN Cards, 2 x SYN921 PSU Card
Dimensions (W x D x H)	483 x 275 x 132 mm

## ELECTRICAL

Pin 1	NMS Address Line 0	Pins 6, 7	Ground
Pin 2	NMS Address Line 1	Pins 3	+12V Nominal
Pin 4	NMS Address Line 2	Pins 5	NMS Data +
Pin 8	NMS Address Line 3	Pins 9	NMS Data -

Literature Reference: 03GF0242\_3  
SYN-8817/0715/USL Iss 7

### Synectic Systems

sales@synecticsglobal.com

**synecticsglobal.com**

Specifications subject to change. E & OE.

Copyright © Synectic Systems Group Limited, Synectic Systems, Inc., Synectic Systems (Asia) Pte. Limited 2015. All Rights Reserved.

MANUFACTURER OF



CAMERA STATIONS

Literature Reference: 03GF0411\_2  
SYN350/0715/A4 Iss 4