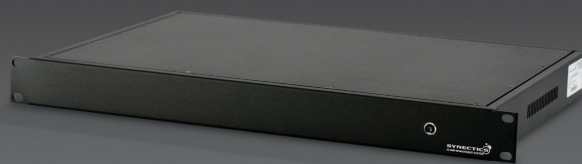


Synectics' Alarm Management System

Synectics' Alarm Management System (SAMS) is an innovative solution combining alarm management with intelligence.



Designed for integration to Synectics Synergy™, SAMS enables Synergy to handle an unparalleled number of contact closure alarm inputs and provide programmable logic for remote switching outputs and optional driving of PTZ cameras.

Alarms can be fed into SAMS from a multitude of devices including access control points, panic buttons and barriers and be automatically displayed in Synergy on alarm activation. SAMS has programmable outputs which can be set to trigger upon alarm activation and control relays, lights or sounders. Using applied logic SAMS can be programmed to only activate certain relays upon the trigger of a sequence of alarms. For example, a light should only switch on upon the trigger of alarms 5 and 7. If alarm 5 or 7 is triggered individually the output relay does not activate.

Each SAMS master can control up to 246 AL8 alarm boards (each with 8 inputs and outputs) providing up to 1992 alarm inputs and outputs per SAMS master. Synergy can integrate to any number of SAMS masters providing limitless scalability even for the largest of applications.

AL8's can be individually deployed in separate locations, for example along a perimeter fence, to create a networked alarm system covering wide areas. Should the connection to Synergy be lost, each AL8 is designed to fail safe and work independently of the control system. The units' logic continues to locally handle alarms and switch outputs until the connection is restored.

Features

- Intelligent alarm management and control
- Each SAMS master scalable to 1992 inputs and outputs using AL8's
- Limitless Scalability with unlimited number of SAMS Master integration to Synergy
- Fail safe Output State
- Programmable alarm control
- Ultimate flexibility when used in conjunction with AL8's
- Stand-alone operation in event of Synergy connection loss

Specifications

SAMS Master

| ALARMS | |
|-----------------------|---|
| Alarm Inputs | 24 opto isolated alarm inputs |
| Alarm Outputs | 24 opto isolated alarm outputs, absolute maximum 30V 50mA |
| POWER | |
| Power Input | 230 / 110V AC 25W max |
| NETWORK | |
| Synergy Connection | RJ45 RS232 |
| Alarm loop Connection | RS485 |
| ENVIRONMENTAL | |
| Size 1U | 19" Rack Mount / 485mm W x 1U / 45mm H x 300mm D |
| Weight | 2 Kg |
| Operating Temperature | -10 ° to 60 °C |
| Storage Temperature | -20 ° to 70 °C |
| Humidity | 0-90% non-condensing |

AL8 PCB & AL8/Weatherproof Box

| ALARMS | |
|---------------|---|
| Alarm Inputs | 8 opto isolated alarm inputs, contact closure |
| Alarm Outputs | 8 opto isolated alarm outputs, absolute maximum 30V 50mA* ¹ 8 switched relay outputs, absolute maximum 250V 6A* ² |
| POWER | |
| Power Input | 9 - 24V AC/DC Input (200mA @ 12V)* ¹ 15 - 24V AC/DC (200mA @ 24V)* ² Mains Input - Please state country of installation or mains supply information at time of order* ³ |
| NETWORK | |
| Interface | RS485 Half Duplex |
| Protocol | Synectics SAMS Proprietary Interface |
| ENVIRONMENTAL | |
| Size | 20 x 70 x 95mm (H x W x D)* ¹ 50 x 95 x 120mm (H x W x D)* ² 130 x 190 x 280mm (H x W x D)* ³ |
| Weight | 200g* ¹ 2.3kg* ³ |

NOTE: *1 Unit supplied as AL8 populated PCB. *2 Unit supplied as AL8 populated PCB with optional relay expansion board.

*3 Unit supplied as AL8 populated PCB with optional relay expansion board. Supplied in a weatherproof box

